



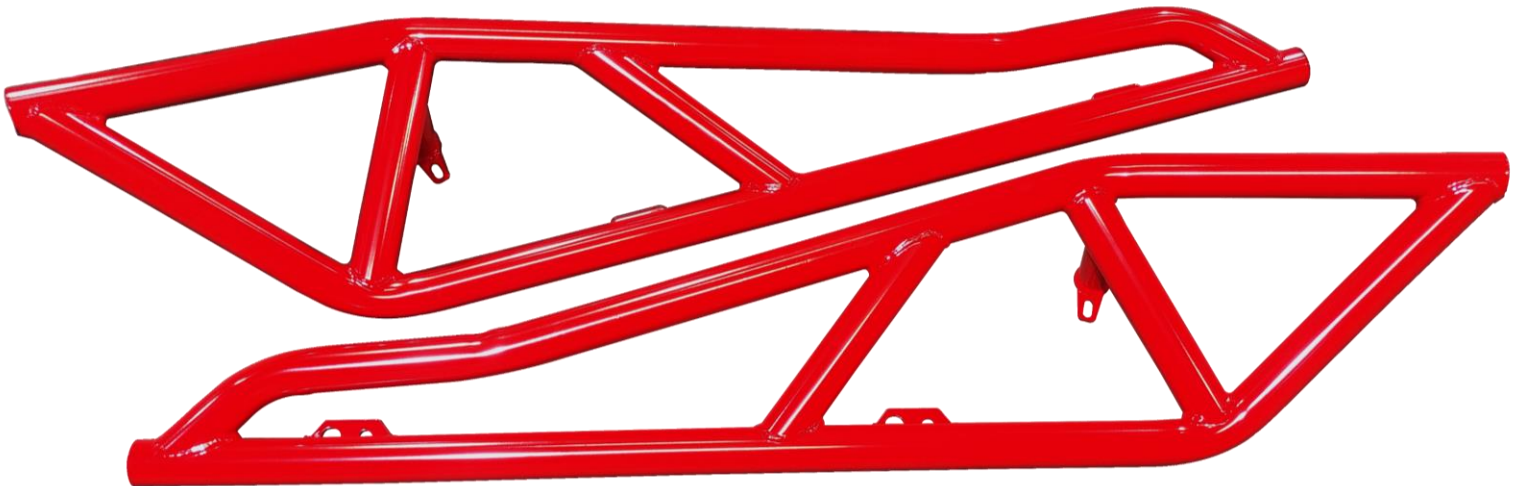
MADE FOR FIRST. BUILT TO LAST.

DISCLAIMER:

PRODUCTS MADE BY L AND W FAB AND MACHINE INC. ARE INTENDED TO FIT YOUR STOCK UTV UNLESS OTHERWISE SPECIFIED. INSTALLING, MODIFYING, OR REMOVING ANY COMPONENTS (FACTORY OR AFTERMARKET) NOT SUPPORTED BY L AND W AND THE INSTRUCTIONS HEREIN WILL VOID YOUR WARRANTY. FOR MORE INFORMATION ON INSTALLATION, WARRANTY, OR PRODUCT USE PLEASE CALL US AT (770) 445-9778

POLARIS RZR TREE KICKERS

FITMENT: 2014+ 2-SEATER RZR 900S/1000S/XP1000/XP TURBO/TURBO S



INSTALLATION MANUAL

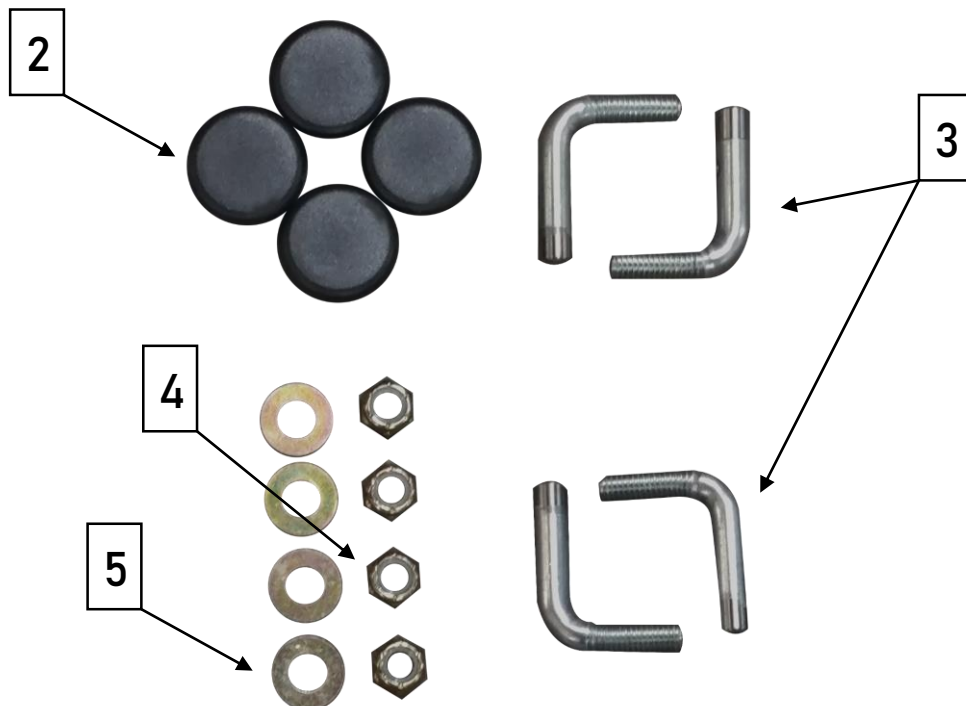
PARTS LIST:

Item #	Part #	Description	Qty.
1	N/A	Tree Kicker	2
2	N/A	Plastic Pipe Cap	4
3	N/A	1/2in L-Bolt	4
4	N/A	1/2in Nylock Nut	4
5	95462A032	1/2in Washer	4

TOOLS:

Tool	Qty.
Drill w/5/16 Metal Bit	1
T40 Torx	1
3/4in Socket	1
Rubber Mallet	1

Hardware:



INSTALLATION:

STEP 1: Lay out the supplied parts and hardware as shown on the parts list. Begin by installing the plastic pipe caps on the four open ends on your tree kickers. These can be difficult to get in by hand, so our recommendation is to push them into the pipe end until the first ring is pushed in then quickly grab a rubber mallet and gently tap the cap in until it is flush.

STEP 2: Use your T40 torx screwdriver to remove the two T40 screws on the bottom of the body and save them for later in the installation process. The screw locations are shown in *figure 1* below.

Figure 1



STEP 3: After these screws are removed use your drill with a 5/16 metal bit to bore out the threads where the T40 screws once were. Give these newly drilled holes a strong blast of air to remove the metal shavings from the work area. Once these holes are drilled grab two of the L-bolts and the two T40 screws just removed. Insert the L-bolts' long side into larger hole just to the side of each previously drilled hole. Now thread the T40 screws into the L-bolt through the holes that were just drilled and into the L-bolt. Tighten these until they are mostly threaded but the bolt can still move. This is shown in *figure 2* below.

Figure 2



STEP 4: Remove the third and last T40 screw near the back of the door. Put it to the side as it will be reused later in the assembly process. We will now mount the tree kickers. To do this align the two bottom side holes with the L-bolts previously installed and mount the tree kicker on these bolts. Put a washer and 1/2in nylock nut on each L-bolt but do not tighten them yet. This step is shown in *figure 3* below.

Figure 2

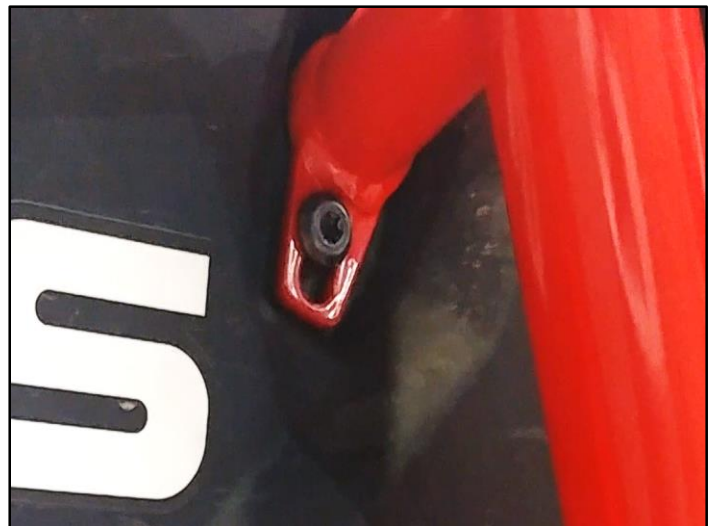


STEP 5: Take the T40 screw set aside from the previous step and thread it over the tree kicker and into its original location. This can be tightened completely at this time. Use *figure 3 & 4* below to assist in the assembly process.

Figure 3



Figure 4



STEP 6: You can now completely tighten the T40 screws on the L-bolts installed in step 3. Once these screws are tightened completely, you can go back to the 1/2in nylock nuts on the L-bolts and tighten them completely as well. Once everything has been tightened the instructions can be repeated on the other side of the vehicle to complete the installation process. The completed process will look like *figure 5* below.

Figure 5



If...	Then...
The tree kicker has trouble mounting on the L-bolts or the back T40 screw will not thread...	Be sure to leave all mounting hardware loose to ensure they can each move freely. Mount the tree kicker while the mounts still have freedom to adjust. Be sure to install the back T40 screw first then continue to tighten the bottom T40 screws and ½ nylock nuts in that order.
The T40 screws on the L-bolts aren't threading smoothly.	Ensure that you drill out the original threads that the T40 screws came from. If the threads remain it will be very difficult or impossible to ensure a strong mounting connection with the L-bolts.

TEMPLE, GA 30179



(770) 445-9778

THANK YOU FOR CHOOSING L&W FAB AND MACHINE INC!