



# AFTERMARKET MOUNT PLATE FOR MILWAUKEE PACKOUT

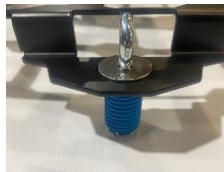
## INSTRUCTIONS



- PARTS:** (1) BENT MOUNTING PLATE  
(2) GRIP MOUNT PLUGS  
(2) 5/16-18 X 1-1/2" SS CARRIAGE BOLTS  
(2) LARGE SS WASHERS  
(2) 5/16 THUMB NUTS

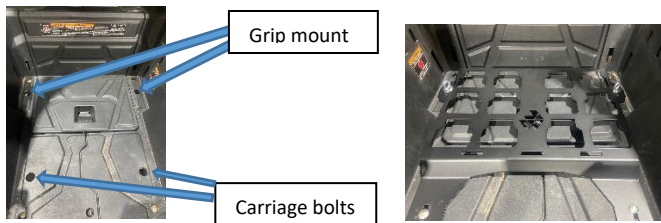
### STEP 1:

Unscrew the 2 grip mount plugs and insert them into the slotted holes that bend outward. The blue expansion pc of the plug will go on bottom, and the washer will go on the top side. Lightly screw the plug together just enough to hold them in place in the holes.



### STEP 2:

Set the mounting plate into the back of the RZR. Place the 2 grip mounts into the 2 holes towards the front of the machine. Drop the 2 carriage bolts into the slots at the back of the plate.



### STEP 3:

From the bottom side of the bed, place a large washer and thumb nut on each of the carriage bolts. Leave loose enough so that the plate will still slide forward and back.



### STEP 4:

The mounting plate is slotted for different variations of packout stacks. The smaller organizers and boxes can be slid closer to the firewall if placed on the bottom. Larger boxes on the bottom requires more room at the firewall. It is best to test fit your packout system with the configuration that you want, slide until boxes just touch the firewall and tighten the thumb screws and grip mounts. This allows enough room for a small cooler in the back.

**THANK YOU FOR CHOOSING L&W FAB PRODUCTS!**